

CHOCTAW

2007 PLAYERS



C. J. HERRING
OFFENSIVE TACKLE

FOOTBALL

PLAYER PROFILES



19 *Ijathus (Jake)* **ALLEN**

WR • 6'4" • 185 • SR
Shubuta, Mississippi
(Southwest MS Junior College)

One of the top returning receivers in the country. All-ASC First Team selection last year. A legitimate pro prospect with excellent size and speed combination. Ran a 4.51 40-yard dash for scouts in the spring. Last season broke a 17-year-old school record with 1,024 receiving yards, tops in the American Southwest Conference.

2006 - JUNIOR SEASON

Earned Honorable Mention All-America honors from Don Hansen's Football Gazette... Second Team All-South Region selection by Don Hansen...Third Team All-South Region selection by D3football.com...First Team All-ASC selection...Set school record with 1,024 receiving yards breaking Nathaniel Bolton's record of 1,012 yards set in 1989... Against playoff teams (UMHB, HSU, Millsaps) Allen hauled in 20 passes for 367 yards and four touchdowns...Only ASC receiver to go over 1,000 yards...Yards per catch average of 19.7 yards ranked 2nd in ASC and eight touchdown receptions ranked 4th...Eight touchdowns also ranked 4th in MC history for single season...52 receptions ranked 4th in ASC and 4th in MC single season history...Caught six passes for 203 yards and a touchdown against McMurry...Went over 100 yards receiving in five games...Season-high three touchdowns in season-opening win at Millsaps...

2005 - SOPHOMORE SEASON

Ranked 11th in the ASC in receptions (39)...ranked 9th in the league with 589 receiving yards...also ranked 9th in the league with six touchdown receptions...most consistent receiver for the Choctaws collecting at least four passes in all but two games...had his best game against Austin College hauling in six passes for 88 yards...had a great second half of the season collecting 24 of his 39 receptions in the final five games including all six touchdown receptions...caught a season high two TD's against Louisiana College and Howard Payne.

BEFORE MISSISSIPPI COLLEGE

Played one season at Southwest Mississippi Community College...Played for Coach Marcus Broyles at Wayne County High School and helped lead the team to the 2002 Mississippi 5A State Championship.

PERSONAL

Son of Aretha and James Allen...Born on January 18, 1985.

RECEIVING GAME BY GAME (2006)

Date	Opponent	No.	Yds	TD	Lg
Sep 02, 2006	at Millsaps College	6	109	3	76
Sep 16, 2006	at Texas Lutheran	2	24	0	17
Sep 23, 2006	MCMURRY	6	203	1	95
Sep 30, 2006	at Hardin-Simmons	8	142	1	35
Oct 07, 2006	LOUISIANA COLLEGE	6	118	2	66
Oct 14, 2006	LAGRANGE COLLEGE	4	65	0	25
Oct 21, 2006	at Mary Hardin-Baylor	6	116	0	55
Oct 28, 2006	EAST TEXAS BAPTIST	2	63	0	48
Nov 04, 2006	at Howard Payne	5	91	0	46
Nov 11, 2006	SUL ROSS STATE	7	93	1	29
Totals		52	1024	8	95

RECEIVING BY YEAR

RECEIVING	G	REC	YDS	TD	LG	REC/G	AVG/C	AVG/G
2005	10	39	589	6	36	3.9	15.1	58.9
2006	10	52	1024	8	95	5.2	19.7	102.4
TOTAL	20	91	1613	14	95	4.6	17.7	80.7



4 *Joe* **BARKER**

RB • 5'9" • 185 • SO
Gulfport, Mississippi
(St. John High School)

After spending 2006 as a backup, Barker is the starter heading into this season. Barker led the state of Mississippi in touchdowns his senior season scoring 34 times in 2004.

2006 - FRESHMAN SEASON

Saw action in five games as a backup running back...gained 31 yards on seven attempts... also caught a pass for five yards

BEFORE MISSISSIPPI COLLEGE

Played for Buddy Singleton at St. John High School...senior season he led the entire state in scoring rushing for over 1,800 yards and scoring 36 TD's...Super 22 selection in 2A... All-District...Sun Herald All-Coast team...Optimist Club Player of the Year

PERSONAL

Son of Velma and Walter Barker...Born on October 6, 1984...Majoring in kinesiology

RUSHING BY YEAR

RUSHING	G	Att	Yds	TD	Lg	AVG/C	AVG/G
2006	5	7	31	0	17	4.4	6.2
TOTAL	5	7	31	0	17	4.4	6.2



35 *Chris* **BLANTON**

RB • 5'11" • 195 • SO
Covington, Georgia
(Newton High School)

Blanton is expected to be the homerun threat this season as the fastest running back on the roster. He has legit 4.4 speed and adds another dimension to the offense.

2006 FRESHMAN SEASON

Saw limited action as a backup running back and special teams player...Was a sprinter on the track team where he provisionally qualified for nationals in the 100 meter dash with a time of 10.71 seconds.

BEFORE MISSISSIPPI COLLEGE

Played for Ben Reeves at Newton High School...Region Player of the Year...Regional MVP...1st team All-Region junior and senior season...Chic-Fil-A Covington Player of the Week...team captain...2005 Mr. Running Back...2005 varsity Mr. Ram award

PERSONAL

Son of Lee and Barbara Blanton...Born on July 19, 1987...Majoring in kinesiology.



41 *Willie* **BRACEY**

DE • 5'11" • 200 • SO
Drew, Mississippi
(Drew High School)

Will have a chance this season to move into the rotation at defensive end.

2006 FRESHMAN SEASON

Saw limited action on special teams.

BEFORE MISSISSIPPI COLLEGE

Played for Coach Todd Alford during final two seasons... MVP junior season... Most Versatile Player Award... Who's Who Among American High School students.. Graduated with honors

PERSONAL

Parents Jennifer and Ollie Shaw



#19 JAKE ALLEN



46 Carlos BRISTER

DT • 5'10" • 245 • JR
McComb, Mississippi
(McComb High School)

Last season Brister earned his way into the three-man rotation at defensive tackle where he played in every game. He is the top returner this season and is expected to hold down the middle.

2006 - SOPHOMORE SEASON

Made the switch to defensive tackle after entering the program as a middle linebacker... Quickly entered the playing rotation as the backup at both defensive tackle positions... Played in all ten games registering 23 tackles to rank 14th on the team...Had 16 solo tackles and three tackles for loss...Best game came against Mary Hardin-Baylor where he finished with a season high five tackles...Consistent performer with three tackles or more in six of ten games.

2005 - FRESHMAN SEASON

Played in a reserve defensive role and earned special teams duties while registering six tackles for the season...Had a season high three tackles against East Texas Baptist University

MCCOMB HIGH SCHOOL

Played at McComb High for Coach Ted Milton...Named Team Captain as a senior...Won the South-State Powerlifting championship...Also contributed to South-State track championship.

Personal

Born on October 2, 1986...Son of Barry and Linda Brister.

TACKLES BY YEAR

	G	UA	A	Total	TFL	Yds	PD	FF	FR
2005	4	2	4	6	0.5	2	0	0	1
2006	10	16	7	23	3.0	7	0	0	0
TOTAL	13	18	11	29	3.5	9	0	0	1



#50 CLINT CHAMPAGNE

50 Clint CHAMPAGNE

LB • 6'2" • 225 • SR
Columbia, Mississippi
(Columbia Academy)

Only player in the ASC to earn either First or Second Team All-ASC honors each of the last three seasons. Defensive leader each of the last three seasons. ASC All-Academic selection.



2006 - JUNIOR SEASON

All-ASC Second Team selection for the third consecutive season...ASC All-Academic selection...played through various injuries the entire season but still finished 3rd on the team with 41 tackles despite missing three games...Had three tackles for loss and one pass broken up...Twice registered eight tackles against UMHB and Texas Lutheran...Finished with seven tackles against McMurry.

2005 - SOPHOMORE SEASON

All-ASC Second Team selection...ASC All-Academic selection...earned All-ASC honors for the second consecutive season...played through injuries the entire season but still finished 8th on the team with 46 tackles including two tackles for loss...registered a season high 12 tackles in loss at Louisiana College...had eight tackles in win over Austin College...forced to miss action in four games due to injury.

2004 - FRESHMAN SEASON

All-ASC Second Team selection...ASC All-Academic selection...had a breakout season as a freshman leading the team with 77 tackles and ranking 16th in the ASC...had a season high 14 tackles in a loss at McMurry...had at least six tackles in every game during the season...played his best against the best teams registering nine tackles against Texas Lutheran and eight tackles against Hardin-Simmons and Mary Hardin-Baylor...had interceptions in back to back games against Hardin-Simmons and Mary Hardin-Baylor...also forced a fumble against Mary Hardin-Baylor.

BEFORE MISSISSIPPI COLLEGE

Played for Brad Duncan at Columbia Academy...First team all-district selection...Set school record for most tackles in a season... Played in the MPSA All-Star game...made a 28 on ACT... Salutatorian...

PERSONAL

Son of Eugene and Sammie Champagne...Born November 20,1984...Majoring in Kinesiology.

TACKLES BY YEAR

	G	UA	A	Total	TFL	Yds	PD	FF	FR
2004	10	32	45	77	1.5	5	2	1	0
2005	9	17	29	46	2.0	3	0	0	2
2006	7	21	20	41	3.0	5	1	0	0
TOTAL	26	70	94	164	6.5	13	3	1	2



21 Justin BULLARD

WR • 6'2" • 190 • SO
Millbrook, AL
(Stanhope Elmore High School)

Bullard earned playing time as a true freshman after settling in as a wideout, he also was a safety prospect. He figures to be a regular in the receiver rotation this season.

2006 FRESHMAN SEASON

Saw action in four games as a backup wide receiver...caught three passes on the season...pulled down a season-high two passes in the win over LaGrange

BEFORE MISSISSIPPI COLLEGE

Played Wide Receiver and Defensive Back for Jeff Foshee at Stanhope Elmore High School in Millbrook, AL...recorded 9 interceptions in his final two years...had a total of 99 tackles in his final two seasons...All-State, All-Metro, and All-County Team member...Scout Preseason Alabama Top 40...ASWA "Super Seniors Best of the Rest"...Millbrook Progress "Dandy Dozen"...Pat Patrick's "The Best in High School Football"

PERSONAL

Son of Roger and Cheryl Bullard...Born on February 2, 1988...Majoring in kinesiology

RECEPTIONS BY YEAR

	G	Rec	Yds	TD	Lg	Rec/G	Avg/C	Avg/G
2006	8	3	23	0	14	0.8	7.7	5.8
TOTAL	8	3	23	0	14	0.8	7.7	5.8

PLAYER PROFILES



54 Skipper CHAPPELKA

OL • 6'1" • 255 • JR
Auburn, Alabama
(Auburn High School)

Enters the 2007 season as the starting center after winning position in the Spring. Has experience in the ASC after seeing backup playing time behind Kern Hoff last season.

2006 - SOPHOMORE SEASON

Saw extensive time on special teams and won the backup center job early in the season... Did not see much playing time behind All-ASC center Kern Hoff.

2005 - FRESHMAN SEASON

Earned playing time on special teams.

BEFORE MISSISSIPPI COLLEGE

Played at Auburn High School for Coach Robert Maddox...Twice won the award for the Best Offensive Lineman...Also twice earned All-Area honors.

PERSONAL

Born on October 16, 1986...Son of Art and Laura Chappelka.



18 Josh CHILDERS

LB • 5'11" • 200 • SR
Pace, Florida
(Pace High School)

Has split time between defensive back and safety the last two seasons but now has a chance to establish himself at linebacker. He has performed well as a part-time linebacker the last two seasons.

2006 - SOPHOMORE SEASON

Moved from safety position to linebacker where he earned a starting position before season's end...Ended the season 5th on the team in tackles with 37 including 1.5 for loss...Led the team with nine tackles against Howard Payne...Finished with seven tackles against Hardin-Simmons and LaGrange.

2005 - FRESHMAN SEASON

Saw little playing time at beginning of season before coming on strong at the end of the year...Finished the year with 31 tackles and 20 of those tackles coming in his final two games...Picked up a season high 11 tackles against East Texas Baptist and nine against Howard Payne.

BEFORE MISSISSIPPI COLLEGE

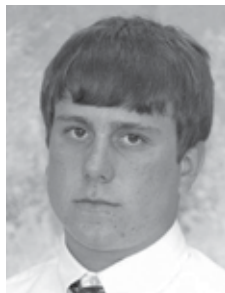
Played for Coach Mickey Lindsey at Pace High School...Named a permanent team captain prior to senior season.

PERSONAL

Son of Jeff and Rina Childers...Born on February 21, 1985...Majoring in sports ministry.

TACKLES BY YEAR

	G	UA	A	Total	TFL	Yds	PD	FF	FR
2005	8	17	14	31	0.0	0	1	0	0
2006	10	15	22	37	1.5	3	1	0	0
TOTAL	18	32	36	68	1.5	3	2	0	0



48 Paul CINK

PK • 5'8" • 170 • SO
Fairhope, Alabama
(Fairhope High School)

Has a strong leg but has played behind all-region kicker Kyle Kruse. Cink will battle for the backup position entering the 2007 season.

2006 FRESHMAN SEASON

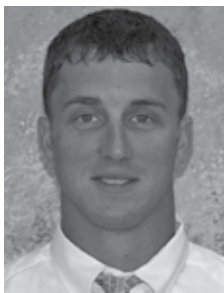
Did not play

BEFORE MISSISSIPPI COLLEGE

Played for Mark Lasseter at Fairhope High School...All-County selection...perfect 32-32 on extra points...returned from ACL injury to be perfect on field goals from inside 30 yard-line

PERSONAL

Son of Jeannie and Ronnie Cink...Born on April 29, 1988...Undecided on major



81 Dusty COLEMAN

WR • 5'8" • 180 • SR
Robertsdale, Alabama
(Robertsdale High School)

Coleman is one of the strongest pound for pound players on the team. Earned Second Team All-ASC honors as a punt returner and enters his third season as a starting wide receiver.

2006 - JUNIOR SEASON

All-ASC Second Team selection as a punt returner...His 18.8 yards per punt return average would have led the country but he was two returns shy of qualifying...Hauled in 26 passes for 354 yards to finish 3rd on the team in both categories...Had a season high 83 yards on four catches against Mary Hardin-Baylor...Caught six passes for 43 yards in win over LaGrange...Went over 100 all-purpose yards against Millsaps and Hardin-Simmons...Had two punt returns for 94 yards including a 79 yard touchdown return against Hardin-Simmons...Also caught three passes for 46 yards to finish with 140 all-purpose yards.

2005 - SOPHOMORE SEASON

All-ASC Honorable Mention selection...Had a breakout season finishing second on the team with 27 receptions for 337 yards, good for 3rd on the team...Caught two touchdown passes with a long reception of 52 yards...Had best game of the season against Howard Payne with seven receptions for 79 yards...Caught both of his touchdown passes against East Texas Baptist finishing with six catches for 64 yards...2004...Caught three passes for 68 yards including a touchdown...Had a long reception of 36 yards.

BEFORE MISSISSIPPI COLLEGE

Played for Coach Kozrol at Robertsdale High School...Named team MVP...Earned team captain honors...All-county selection...All-region honorable mention choice.

PERSONAL

Son of Danny and Sonnie Coleman...Born on June 30, 1986...Mu Alpha Theta member...Boys State representative...Majoring in mathematics.

RECEIVING BY SEASON

	G	Rec	Yds	TD	Lg	Rec/G	Avg/C	Avg/G
2004	3	3	68	1	36	1.0	22.7	22.7
2005	9	27	337	2	52	3.0	12.5	37.4
2006	10	26	354	0	59	2.6	13.6	35.4
TOTAL	22	56	759	3	59	2.5	13.6	34.5

PUNT RETURNS BY SEASON

	G	No.	Yds	TD	Lg	Avg/R	Avg/G
2004	3	0	0	0	0	0.0	0.0
2005	9	0	0	0	0	0.0	0.0
2006	10	8	150	1	79	18.8	15.0
TOTAL	22	8	150	1	79	18.8	6.8



5 Corey COOLEY

**SS • 6'0" • 190 • SR
Seminary, Mississippi
(Jones Junior College)**

Cooley enters the season as one of the leaders of the defense. He possesses excellent athleticism and is a physical player, but has struggled to stay healthy. A healthy 2007 could have him among the ASC's top safeties.

2006 - JUNIOR SEASON

Missed the first game with an injury and was hampered all season....Still managed to record ten tackles in two games against Hardin-Simmons and Mary Hardin-Baylor...Ended the season with 33 tackles in just six games played ranking him sixth on the team...Was named to the D3football.com National Team of the Week after leading the Choctaws to a win over nationally-ranked Texas Lutheran...Cooley finished that game with four tackles and two interceptions including the game-clinching pick in the final minute.

2005 - SOPHOMORE SEASON

Had a great start to the season leading the team in tackles through four games before suffering a season-ending injury...Picked up 31 tackles in three games and led the ASC in tackles among defensive backs before the injury...Had a season high nine tackles against Mary Hardin-Baylor...finished with eight tackles against Sul Ross State and seven against both Hardin-Simmons and McMurry...picked up his only interception against McMurry... picked up 1.5 tackles for loss in the game against the University of Mary Hardin-Baylor.

BEFORE MISSISSIPPI COLLEGE

Played two years for Parker Dykes at Jones Junior College...Played at Seminary High School for Coach Lance Morioso...Winner of the Bulldog award...All-Area and All-District selection...Named Team Captain...Earned Most Valuable Offensive Back award.

PERSONAL

Born on July 24,1984...Son of Audra and Lee Hubbard.

TACKLES BY YEAR

	G	UA	A	Total	TFL	Yds	PD	FF	FR
2005	4	20	11	31	1.5	2	1	0	0
2006	7	27	6	33	1.0	11	3	1	0
TOTAL	11	47	17	64	2.5	13	4	1	0



43 Maurice COWAN

**LB • 5'10" • 200 • SO
Bentonla, Mississippi
(Yazoo County High School)**

Earned playing time in his first season at MC. Exited Spring practices second on the depth chart at outside linebacker.

2006 - FRESHMAN SEASON

Earned playing time on special teams and in spot duty at outside linebacker...Finished the seson with 12 total tackles including six solo stops.

BEFORE MISSISSIPPI COLLEGE

Played for Chad Cook at Yazoo County High School...All-Herald selection...All-District...MVP Defensive Line...Power 107 Player of the Week...National Honor Society... SADD member.

PERSONAL

Son of Judge and Sonya Cowan...Born on September 15, 1987...Majoring in sports medicine.

TACKLES BY SEASON

	G	UA	A	Total	TFL	Yds	PD	FF	FR
2006	5	6	6	12	0.0	0	1	1	0
TOTAL	5	6	6	12	0.0	0	1	1	0



68 Nelson CRADDOCK

**OL • 6'2" • 280 • JR
Citronelle, Alabama
(Citronelle High School)**

Craddock enters his third straight season as a starter after earning the starting position during his freshman campaign...Craddock has become of the ASC's most consistent blockers and was part of a unit that allowed just seven sacks a year ago.

2006 - SOPHOMORE SEASON

Started every game for the Choctaws at his guard position. Graded as one of the better blockers on the team helping the unit allow just seven sacks.

2005 - FRESHMAN SEASON

One of the more highly recruited freshman entering the program...earned a starting position in his first season at the guard position.

BEFORE MISSISSIPPI COLLEGE

Played at Citronelle High for Coach Ashley Johnson...

PERSONAL

Son of Mark and Regina Craddock...Born on October 26, 1986.



7 Ryne DAVISON

**FS • 6'2" • 185 • JR]
Fairhope, Alabama
(Fairhope High School)**

In just two seasons, Davison has picked off ten passes and is on pace to set a new school record for career picks. He has excellent anticipation and a knack for getting around the ball.

2006 - SOPHOMORE SEASON

All-ASC Honorable Mention selection for the second consecutive season...Picked off four passes giving him ten total for his career...Finished 7th on the team with 32 total tackles after starting every game...His four interceptions were a team high for the second straight season...Also broke up four passes, second highest on the team...Has consistent season registering at least three tackles in every game but two...Had a season high five tackles and one interception against Howard Payne.

2005 - FRESHMAN SEASON

All-ASC Honorable Mention selection...made an immediate impact finishing one interception short of the school record with six for the season...finished 7th on the team with 48 total tackles including 22 solo stops...broke up six passes in addition to six interceptions... had a season high eleven tackles against Texas Lutheran...also registered eight tackles against Mary Hardin-Baylor and Louisiana College...picked off two passes in a game twice against Austin College and Howard Payne.

BEFORE MISSISSIPPI COLLEGE

Played for Mark Cosseter at Fairhope High School...three-time All-County selection...All-Region honorable mention...National Honor Society...Academic Letter Club...

PERSONAL

Son of Jon and Cindy Davison...Born on Junr 13, 1987.

TACKLES BY YEAR

	G	UA	A	Total	TFL	Yds	PD	FF	FR
2005	10	22	26	48	1.5	2	12	1	0
2006	10	14	18	32	1.0	1	8	1	1
TOTAL	20	36	44	80	2.5	3	20	2	1

INTERCEPTIONS BY YEAR

	G	NO	YDS	TD	LG	Avg./R
2005	10	6	2	0	2	0.3
2006	10	4	40	0	33	10.0
TOTAL	20	10	42	0	33	4.2

PLAYER PROFILES



40 Renard ELLIS

TE • 6'1" • 220 • SO
Winter Haven, Florida
(Winter Haven High School)

As a true freshman earned the starting position at tight end. Excellent athlete who should excel in his second year in the program.

2006 - SOPHOMORE SEASON

Started at tight end for the Choctaws in all ten games last season...Caught three passes for 28 yards and a touchdown...caught a touchdown pass against Louisiana College

BEFORE MISSISSIPPI COLLEGE

Played for Charlie Tate at Winter Haven High School...second team all-state defensive end...all-district...all-county...defensive MVP

PERSONAL

Son of Merriam Ellis...Born on May 16, 1988...Undecided on major

RECEIVING BY SEASON

	G	Rec	Yds	TD	Lg	Rec/G	Avg/C	Avg/G
2006	6	3	28	1	20	0.5	9.3	4.7
TOTAL	6	3	28	1	20	0.5	9.3	4.7



11 Brian HARRIS

QB • 6'0" • 195 • JR
Picayune, Mississippi
(Pearl River Community College)

2006 JUNIOR SEASON

Saw action in the final three games of the season, starting the finale against Sul Ross St...completed 23 of 31 passes with two touchdowns and one interception...went 16-23 for

229 yards against Sul Ross St.

BEFORE MISSISSIPPI COLLEGE

Played Quarterback for Tim Hatten at Pearl River Community College...played Quarterback for Mike Fair at Ranger College in Texas...played Quarterback for Dodd Lee at Picayune Memorial High School

PERSONAL

Son of Loren and Dianne Harris...Born on April 4, 1984...Majoring in sports management

PASSING BY SEASON

	G	Att	Cmp	Int	Yds	TD	Lg	Pct	Avg/P	Avg/G	Effic
2006	3	31	23	1	335	2	39	74.2	10.8	111.7	179.8
TOTAL	3	31	23	1	335	2	39	74.2	10.8	111.7	179.8



56 Jay HAYNES

LB • 6'0" • 215 • JR
Munford, Alabama
(Munford HS)

Earned playing time last season as a backup and special teams player. Will push for more playing time this season.

2006 - FRESHMAN SEASON

Recorded two tackles for the year working primarily as a special teams player.

BEFORE MISSISSIPPI COLLEGE

Played at Munford High for Coach Heath Harmon...Team MVP...Team Captain...All-County selection...Nominated for the Bryan Jordan Scholar-Athlete award...Student Government Association student body President...graduated #14 in class...

PERSONAL

Son of Tim and Cindy Haynes...Born on March 17, 1987.



85 Brian HEISER

WR • 6'1" • 165 • SO
Merritt Island, Florida
(Merritt Island Christian School)

2006 FRESHMAN SEASON

Did not play

BEFORE MISSISSIPPI COLLEGE

Played Quarterback and Defensive Back for John Jensen at Merritt Island Christian School in Florida...All-State First Team member...MFCC Player of the Year...MFCC All-Conference Football Team 3 years in a row...Wendy's High School Heisman nominee...ESPN Radio Small School Player of the Week...ESPN Radio All-Small School Team...Beef O'Brady's Offensive and Defensive Player of the Week...offensive team captain...North vs. South All-Star team

PERSONAL

Son of Jeff and April Heiser...Born on March 1, 1988...Undecided on major



62 C. J. HERRING

OL • 6'4" • 330 • SO
Citronelle, Alabama
(Citronelle High School)

One of the more dominant offensive tackles in the American Southwest Conference. Needed just one season to earn Second Team All-ASC honors. A big reason for the offensive success a year ago.

2006 FRESHMAN SEASON

Started on offensive line as a freshman last season...named to Second Team All-ASC...one of only two offensive linemen with that distinction in 2006

BEFORE MISSISSIPPI COLLEGE

played for Ashley Johnson at Citronelle High School...ranked two stars by Scout.com...First Team All-State...First Team All-County

PERSONAL

Son of Debra Herring...Born on May 28, 1987...Majoring in secondary education



#62 C. J. HERRING



3 Devon JAMES

DB • 5'11" • 180 • SO
Prairieville, LA
(Dutchtown High School)

Earned immediate playing time as a freshman in a backup role. Gives coaches three options at the safety positions.

2006 FRESHMAN SEASON

Saw action in eight games last season...recorded 18 total tackles including eight solo last season...recorded a season-high seven tackles against Howard Payne...brought down one interception against LaGrange College

BEFORE MISSISSIPPI COLLEGE

Played for Benny Sala at Dutchtown High School...all-district honorable mention

PERSONAL

Son of Clarett and Donald Blout...Born on November 24, 1987...Majoring in business administration

TACKLES BY YEAR

	G	UA	A	Total	TFL	Yds	PD	FF	FR
2006	8	8	10	18	0.0	0	1	0	0
TOTAL	8	8	10	18	0.0	0	1	0	0



20 Andre JOHNSON

LB • 5'10" • 200 • SO
Columbia, MS
(Columbia High School)

2006 FRESHMAN SEASON

Saw action in three games as a backup linebacker...recorded four total tackles including three solo stops...

BEFORE MISSISSIPPI COLLEGE

Played for Coach Wood at Columbia High School...all-district honorable mention...MVP linebacker

PERSONAL

Son of Dorothy Johnson and Jewel Johnson...Born on July 19, 1988...Majoring in biology medical science



26 Scott JOHNSON

WR • 5'7" • 180 • SO
Cocoa, Florida
(Brevard Community College)

2006 SOPHOMORE SEASON

Saw limited action as a backup wide receiver

BEFORE MISSISSIPPI COLLEGE

Played at Brevard Community College in Cocoa, FL...played Wide Receiver, Defensive Back, and Kicker for John Jensen at Merritt Island Christian School in Florida...ESPN Radio Player of the Week...Beef O'Brady's Player of the Week twice...Mid-Atlantic Christian Conference First Team member...Brevard County All-Star selection

PERSONAL

Son of Randy and Genia Johnson...Born on May 3, 1988...Majoring in kinesiology



13 Kyle KRUSE

PK • 5'9" • 155 • JR
Metairie, Louisiana
(Jesuit High School)

One of the top returning placekickers in the country after an All-South Region a year ago. Kruse hit 10-13 field goal attempts to finish one short of the school record.

2006 - SOPHOMORE SEASON

Had a stellar season to be named a Third Team All-South Region player by D3Football.com...Named Second Team All-ASC...Hit on 10-13 field goal attempts to finish one shy of the Mississippi College record...His 10 made field goals led the conference...Had his best game against LaGrange College hitting all four of his field goal attempts.

2005 - FRESHMAN SEASON

Earned the starting placekicking job and was good on 6-8 field goal attempts with a long of 35 yards...missed just one extra point finishing 29-30...led the team in scoring with 47 total points...also punted three times against East Texas Baptist averaging 34.3 yards per punt with a long of 49 yards...was 2-2 on field goals against Austin College helping the Choctaws to the win.

BEFORE MISSISSIPPI COLLEGE

Played at Jesuit High School for Coach Vic Eumont...All-New Orleans...All-District...

PERSONAL

Son of Nancy and B. J. Kruse...Born on December 25, 1986.

FIELD GOALS BY YEAR

	G	Att	Made	Lg	Pct
2005	9	8	6	35	75.0
2006	10	13	10	39	76.9
TOTAL	19	21	16	39	76.2

PUNTING BY YEAR

	G	No.	Yds	Lg	Avg.
2005	9	3	103	49	34.3
2006	10	3	110	40	36.7
TOTAL	19	6	213	49	35.5



12 Brad MADDEN

QB • 6'1" • 180 • JR
Vancleave, Mississippi
(Vancleave High School)

Had a remarkable season last year piling up the 4th-most all-purpose yards in MC history with 2,131. Took over for injured QB Adam Shaffer in the first game and turned in one of MC's best seasons for a signal caller. Enters the season as the backup QB.

2006 - SOPHOMORE SEASON

Passed for the fifth highest yardage total in Mississippi College history finishing with 2,025 yards...Completed 152-261 passes for 12 touchdowns to go along with 11 interceptions...Ended the season with 2,131 yards of total offense, the 4th-most in MC history...Had best game of the season against McMurry throwing for 386 yards and a touchdown...Twice threw for three touchdowns during the season, against Hardin-Simmons and against Louisiana College...Threw for more than 200 yards in six straight games and went over 300 yards passing in two games.

2005 - FRESHMAN SEASON

Did not play during freshman season.

BEFORE MISSISSIPPI COLLEGE

Played at Vancleave High School for Coach Jim Bloomfield...All-District selection twice...Most Valuable Offensive Back...Bulldog award...MVP of Pascagoula River Bowl.

PERSONAL

Son of Bart and Liz Madden...Born on June 19, 1987.

PLAYER PROFILES

PASSING BY SEASON

	G	Att	Cmp	Int	Yds	TD	Lg	Pct	Avg/P	Avg/G	Effic
2006	9	261	152	11	2025	12	95	58.2	7.8	225.0	130.2
TOTAL	9	261	152	11	2025	12	95	58.2	7.8	225.0	130.2

TOTAL OFFENSE BY SEASON

	G	Rush	Pass	Total	Avg/G
2006	9	106	2025	2131	236.8
TOTAL	9	106	2025	2131	236.8



73 Jacob MATTINA

OT • 6'1" • 260 • JR
Gulfport, Mississippi
(St.. John High School)

Enters the 2007 season as the starting left tackle. Played well in the spring to earn the starting promotion after a solid 2006 season.

2006 - SOPHOMORE SEASON

Moved into a reserve role as the 3rd offensive tackle...Saw action in every game on special teams in addition to offensive line.

2005 - FRESHMAN SEASON

Saw limited playing time during freshman season.

BEFORE MISSISSIPPI COLLEGE

Played at St. John High School...Most Outstanding Defensive Lineman...Super 22 selection...All-District...Mr. Eagle.

PERSONAL

Son of Jeff and Charlene Mattina...Born on January 20, 1987.



34 Tommy MCBRIDE

OL • 5'11" • 200 • SO
Albany, Georgia
(Sherwood Christian School)

2006 FRESHMAN SEASON

Saw limited action as a backup linebacker

BEFORE MISSISSIPPI COLLEGE

Played Linebacker for Jimmy Fields at Sherwood Christian High School in Albany, GA...All-Region performer in football...All-Region performer in wrestling...State qualifier in wrestling...All-Region performer in track...State qualifier in track...Senior Leadership Award in football, basketball, wrestling, and track

PERSONAL

Son of Jim and Sheila McBride...Born on August 5, 1988...Majoring in business.



23 Corey PARISH

LB • 5'10" • 190 • SO
Prentiss, Mississippi
(Prentiss Christian School)

2006 FRESHMAN SEASON

Saw limited action as a backup linebacker

BEFORE MISSISSIPPI COLLEGE

Played for Dan Fails at Prentiss Christian...senior MVP...All-District two years...Offensive MVP junior season...team captain

PERSONAL

Son of Jeff and Gayle Parish...Born on May 17, 1988...Majoring in math and history



87 Javier PERE'

WR • 6'1" • 205 • JR
Natchitoches, Louisiana
(St. Mary's High School)

2006 - SOPHOMORE SEASON

Saw limited playing time on special teams.

2005 - FRESHMAN SEASON

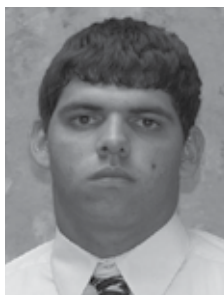
Did not play.

BEFORE MISSISSIPPI COLLEGE

Played for Eric Held at St.. Mary's High School...played in the Louisiana High School Coaches Association All-Star game...All-State...All-Parish...All-Parish defensive MVP...Team Co-Offensive MVP.

PERSONAL

Son of Javier and Ann Pere'...Born on May 21, 1987...Majoring in biology.



2 Josh REED

WR • 6'2" • 180 • SO
McIntosh, Alabama
(Leroy High School)

Talented receiver who could make a big impact in 2007. Excellent size and athleticism and should prosper after a full season in the program.

2006 FRESHMAN SEASON

Saw action in five games as a backup wide receiver...caught five passes for 63 yards and a touchdown on the season...pulled down his touchdown against Hardin-Simmons...recorded a season-high 35 yards receiving against Mary Hardin-Baylor

BEFORE MISSISSIPPI COLLEGE

Played Wide Receiver and was a punt return specialist for Scott Phelps at Leroy High School in Alabama...holds the school record for most receptions in a season (52)...named to the All-State Football Team as a junior and senior...named to the All-County team as a junior and senior...named to the All-Region Team as a junior and senior...MVP of the State Championship game in 2004...finalist for 2A Back of the Year as a senior...Southwest Offensive Player of the Year as a senior...team captain as a senior

PERSONAL

Son of Ricky D. and Sharon Reed...Born on November 5, 1987...Undecided on major

RECEIVING BY SEASON

	G	Rec	Yds	TD	Lg	Rec/G	Avg/C	Avg/G
2006	5	5	63	1	29	1.0	12.6	12.6
TOTAL	5	5	63	1	29	1.0	12.6	12.6



24 Kevin ROBINSON

FB • 5'11" • 210 • JR
Summit, Mississippi
(McComb High School)

2006 SOPHOMORE SEASON

Saw action in five games last season as a backup tailback...caught a touchdown pass against Louisiana College...also recorded a solo tackle

2004 FRESHMAN SEASON

Played for Johnny Mills at Mississippi College in 2004...played in all 10 games as a backup tailback and kick returner

BEFORE MISSISSIPPI COLLEGE

Played for Ted Milton at McComb High School...three-year letterman in football and track...two-year letterman in basketball...Honorable Mention All-District

PERSONAL

Son of Jimmy Robinson...Born on March 16, 1986...Majoring in sports medicine



52 Chris ROUTH

OL • 6'0" • 290 • JR
Lewrenceville, Georgia
(Central Gwinnett High School)

Has worked hard to earn a shot at playing time. After primarily used on special teams in 2006, Routh earned the starting guard position during Spring practice.

2006 SOPHOMORE SEASON

Saw limited playing time on special teams and as a backup offensive guard.

2005 FRESHMAN SEASON

Saw limited playing time on special teams.

BEFORE MISSISSIPPI COLLEGE

Played at Central Gwinnett for Coach Brad Warren...Two-year letterman...Played on 2004 State playoff team.

PERSONAL

Son of Charlie and Sissy Routh...Born September 4, 1986.



42 Jonathan RUSSELL

P • 6'4" • 210 • SR
Quitman, Mississippi
(Quitman High School)

Arguably, the top Division III punter in the country this season, he was selected as a Preseason Second Team All-American by D3football.com. An All-American in 2005, Russell missed last season after having Tommy John Surgery.

He was the ASC East Division Pitcher of the Year two years ago.

2006 SEASON

Missed season due to injury.

2005 JUNIOR SEASON

Earned second team All-America honors from D3football.com and Don Hansen's football Gazette...His average of 42.5 yards per punt ranked second in the nation and was the second best season in Mississippi College history...He set a new school record with an 80 yards punt against Mary Hardin-Baylor...Also set a school record against UMHB with 586 total punt yards...Named ASC East Division Pitcher of the Year for the baseball team...Led the ASC in innings pitched and strikeouts.

BEFORE MISSISSIPPI COLLEGE

Played at East Mississippi Community College...All-Region selection...Played for Coach James Holloman at Quitman High School...All-State selection...District 5-4A Most Valuable Player...Twice Meridian Player of the Week.

PERSONAL

Son of William and Sue Russell...Born on October 24, 1984.

PUNTING BY YEAR

	No.	Yds	Avg	Long	TB	FC	I20	Blkd
Jonathan Russell	57	2414	42.4	80	6	3	17	2
Total	64	2560	40.0	80	6	3	17	2



42 Stephen ROY

LB • 6'2" • 210 • SO
Deatsville, Alabama
(Stanhope Elmore High School)

Wasted little time earning a starting position last year as a true freshman. Enters the 2007 season as the starting outside linebacker. Solid ASC linebacker with good size and athleticism.

2006 FRESHMAN SEASON

Finished season as starting linebacker...played in all 10 games recording 31 total tackles including 15 solo stops...recorded three tackles for loss...recorded a season-high six tackles against Howard Payne

BEFORE MISSISSIPPI COLLEGE

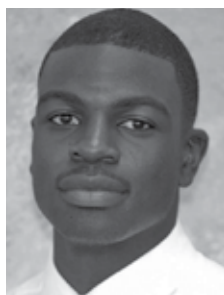
played Linebacker for Jeff Foshee at Stanhope Elmore High School in Millbrook, AL...First Team Tri-County Defense junior and senior year...All-County Defense junior and senior year...Honorable Mention performer in class 5A...team captain junior and senior year

PERSONAL

Son of Greg and Tammy Roy...Born on October 22, 1987...Majoring in criminal justice

TACKLES BY YEAR

	G	UA	A	Total	TFL	Yds	PD	FF	FR
2006	10	15	16	31	3.0	6	1	0	0
TOTAL	10	15	16	31	3.0	6	1	0	0



8 Jimmy SAMPSON

CB • 5'9" • 190 • SO
Monroe, Louisiana
(Wossman High School)

One of the most gifted athletes on the team. Has all the tools to be a great cornerback in the ASC.

2006 FRESHMAN SEASON

Saw action in nine games as a backup defensive back...recorded eight total tackles including six solo stops...broke up a pass against LaGrange College...recovered a fumble in the Backyard Brawl against Millsaps

BEFORE MISSISSIPPI COLLEGE

Played for Vincent Landrum at Wossman High School...All-District...MVP of defensive backs...senior award

PERSONAL

Son of Jimmy and Kathy Sampson...Born on January 2, 1988...Majoring in criminal justice

TACKLES BY YEAR

	G	UA	A	Total	TFL	Yds	PD	FF	FR
2006	9	6	2	8	0.0	0	1	0	1
TOTAL	9	6	2	8	0.0	0	1	0	1



9 Adam SHAFFER

QB • 6'2" • 205 • SO
Brandon, Mississippi
(Jackson Academy)

After a stellar freshman campaign, Shaffer entered last season as one of the favorites for ASC Offensive MVP before suffering a knee injury...Has thrown for more than 2,000 yards and 25 touchdowns in his last seven starts.

2006 - SOPHOMORE SEASON

Was lost for the season after injuring his knee before halftime of first game against Millsaps...In one half, Shaffer passed for 311 yards and five touchdowns...His five touchdown throws were just one short of his own school record of six...Completed 17-22 passes with one interception.

PLAYER PROFILES

2005 - FRESHMAN SEASON

Earned starting position before season opener and made nine starts missing one game due to injury...Enjoyed record-setting freshman season in which he broke most freshman school passing records including passing yards (2,158), completions (173), pass attempts (314) and passing touchdowns (20)...Caught fire in final six games completing 128-229 (56%) passes for 1,710 yards and all 20 touchdowns...Passed for three or more touchdowns in each of final five games...Set school record by completing passes to eleven different receivers against Austin College...Completed passes to nine or more receivers in four games...Also gained 263 yards rushing including one touchdown (lost 170 yards on 20 sacks)...Topped 300 yards passing three times including season-high 359 yards in season-ending blowout win over Belhaven...Completed 24-36 passes against Belhaven including a school record six touchdowns... Completed 19-42 passes for 344 yards in loss to Texas Lutheran...Completed 22-35 passes and threw for 344 yards in win over Austin College.

BEFORE MISSISSIPPI COLLEGE

Played at Jackson Academy for Coach Joey Hawkins...First team All-Conference selection...MPSA All-Star as quarterback and punter...MPSA All-State punter...Blitz 16 Metro Player of the Week.

PERSONAL

Son of Sam and Susan Shaffer...Born on February 23, 1987...Majoring in chemistry.

PASSING BY SEASON

	G	Att	Cmp	Int	Yds	TD	Lg	Pct	Avg/P	Avg/G	Effic
2005	9	314	173	10	2158	20	68	55.1	6.9	239.8	127.5
2006	1	22	17	1	311	5	76	77.3	14.1	311.0	261.9
TOTAL	10	336	190	11	2469	25	76	56.5	7.3	246.9	136.3

TOTAL OFFENSE BY SEASON

	G	Rush	Pass	Total	Avg/G
2005	9	93	2158	2251	250.1
2006	1	12	311	323	323.0
TOTAL	10	105	2469	2574	257.4

PASSING BY GAME

2005 Season	Att-Cmp-Int	Yds	TD	Lg
at Sul Ross State	37- 19- 1	207	0	52
Hardin-Simmons	28- 17- 1	130	0	25
at Mary Hardin-Baylor	20- 9- 0	111	0	28
at Austin College	35- 22- 1	319	2	30
Texas Lutheran	42- 19- 1	344	3	34
at Louisiana College	35- 21- 1	242	3	68
at East Texas Baptist	37- 22- 2	221	3	34
HOWARD PAYNE	44- 20- 2	225	3	36
BELHAVEN COLLEGE	36- 24- 1	359	6	68
Totals	314-173- 10	2158	20	68

2006 Season

	Att-Cmp-Int	Yds	TD	Lg
at Millsaps	22- 17- 1	311	5	76



51 Paul SHINN

OL • 5'11" • 240 • SO
Metairie, Louisiana
(East Jefferson High School)

2006 FRESHMAN SEASON

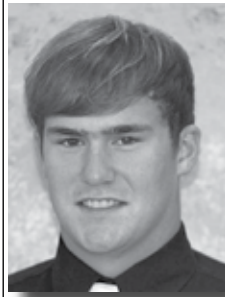
Did not play

BEFORE MISSISSIPPI COLLEGE

Played for Henry Rundo at East Jefferson High School...captain of football and track team...recipient of Shannon Sullivan award

PERSONAL

Son of Paul and Lori Shinn...Born on April 14, 1988...Undecided on major



82 Tyler SMITH

DL • 6'2" • 240 • SO
Semmes, Alabama
(St. Paul Episcopal)

2006 FRESHMAN SEASON

Saw limited action as a backup defensive lineman

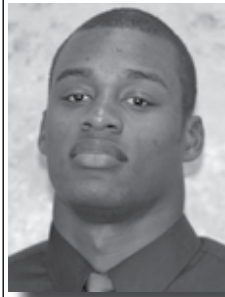
BEFORE MISSISSIPPI COLLEGE

Played for Eddie Grath at St. Paul's Episcopal School...

MVP...All-Region...team captain

PERSONAL

Son of Ernie and Tanya Smith...Born on October 23, 1987...Majoring in business administration



47 Rodney STEEN

DE • 6'2" • 230 • SO
Coffeerville, Mississippi
(Coffeerville High School)

Enters the season as the starting defensive end opposite Brannon Willisson. Added 20 pounds in the offseason to go with already excellent athleticism.

2006 FRESHMAN SEASON

Saw action in seven games as a backup defensive lineman...recorded seven tackles including four solo stops...recorded a season-high two tackles against Sul Ross St. and LaGrange

BEFORE MISSISSIPPI COLLEGE

played for David Boughman at Coffeerville High School...2nd team All-State...Player of the Week for Grenada Daily Star...1st team All-Region...Pirate award

PERSONAL

Son of Artis and Tennie Steen...Born on November 10, 1987...Majoring in kinesiology

TACKLES BY YEAR

	G	UA	A	Total	TFL	Yds	PD	FF	FR
2006	7	4	3	7	0.0	0	0	0	0
TOTAL	7	4	3	7	0.0	0	0	0	0



16 Clayton STEVENS

WR • 6'1" • 190 • JR
Long Beach, Mississippi
(Long Beach High School)

2006 SOPHOMORE SEASON

Saw limited action at wide receiver. Did play in one game at quarterback rushing for 20 yards on two attempts and

passing for nine yards.

2005 FRESHMAN SEASON

Saw limited action at wide receiver.

BEFORE MISSISSIPPI COLLEGE

Played at Long Beach High School for Coach Sean Harden...All-South State...Honorable Mention All-State...Most Valuable Wide Receiver...Iron Man award.

PERSONAL

Son of Mary Stevens...Born on October 27, 1986.



15 Marcus TERRY

**WR • 6'0" • 205 • SR
Columbia, Mississippi
(East Mississippi CC)**

Primed for a breakout senior season after a solid 2006 campaign. Great athlete who is an excellent blocking wideout. Ranked among the ASC's top ten wide receivers in receptions.

2006 - JUNIOR SEASON

Had a great junior season finishing second on the team with 40 receptions for 525 yards and five touchdowns...His 40 receptions ranked 9th in the ASC...

2005 - SOPHOMORE SEASON

Hauled in 13 passes for 172 yards including a season long reception of 34 yards...Caught a season-high three passes for 51 yards against Texas Lutheran...Caught passes in eight of ten games.

BEFORE MISSISSIPPI COLLEGE

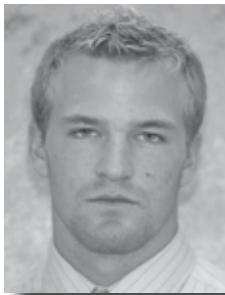
Transferred from East Mississippi Community College...Played in High School at New Hope High for Coach Hardin...Earned Most Valuable Wide Receiver and Defensive Back honors at New Hope...All-Division selection.

PERSONAL

Son of Sarah and Charlie Grays...Born on July 13, 1984.

RECEIVING BY SEASON

	G	Rec	Yds	TD	Lg	Rec/G	Avg/C	Avg/G
2005	10	13	172	0	34	1.3	13.2	17.2
2006	10	40	525	5	74	4.0	13.1	52.5
TOTAL	20	53	697	5	74	2.7	13.2	34.8



28 Brent THOMPSON

**WR • 6'1" • 180 • SO
Franklin, Tennessee
(Page High School)**

One of the top athletes on the team. Expected to fit into regular wide receiver playing rotation.

2006 FRESHMAN SEASON

Saw action in seven games as a backup wide receiver...caught three passes for 23 yards on the season...caught a season-high two passes for 12 yards against LaGrange

BEFORE MISSISSIPPI COLLEGE

Played for Alvin Palmer at Page High School...All-Region twice...MVP...state decathlon champion for A-AA...2nd in state in 110 high hurdles...3rd state in 300 meter hurdles...Middle TN decathlon champion...29 receptions for 407 yards

PERSONAL

Son of Tim and Jennifer Thompson...Born on July 8, 1987...Undecided on major



97 David VIRGIL

**DE • 6'0" • 200 • SO
Crystal Springs, Mississippi
(Crystal Springs High School)**

2006 FRESHMAN SEASON

Saw limited action as a backup defensive lineman

BEFORE MISSISSIPPI COLLEGE

Played Offensive Line and Defensive End for David Virgil at Crystal Springs High School...Honorable Mention All-District performer junior year...First Team All-District senior year...Best Offensive Lineman junior and senior year...Wendy's High School Heisman nominee...National Scholar Athlete award...Linda Calhoun Scholar Athlete District nominee

PERSONAL

Son of David and Debbie Virgil...Born on February 21, 1988...Majoring in kinesiology



55 Daniel WAIDE

**DT • 5'11" • 250 • JR
West Point, MS
(Itawamba Community College)**

One of the strongest players on the team after two full years in the weight room...Will battle for playing time at defensive tackle after finally settling into a position.

2006 - SOPHOMORE SEASON

Switched positions during the season moving from defense to tight end. Earned playing time as a solid special teams contributor. Finished the year with two total tackles on special teams.

2005 - FRESHMAN SEASON

did not play.

BEFORE MISSISSIPPI COLLEGE

Played for coach Terrill at Itawamba Community College...Played for Gary White at Immanuel High School.

PERSONAL

Son of Amy and Chevis Waide...Born on June 17, 1985...Majoring in political science.



43 Brannon WALLS

**P • 5'8" • 165 • SO
Madison, Mississippi
(Ridgeland High School)**

2006 FRESHMAN SEASON

Played as the kickoff specialist last season...kicked off a total of 47 times with four touchbacks...also played for the Choctaw baseball team in the spring as a pitcher and outfielder

BEFORE MISSISSIPPI COLLEGE

Played at Ridgeland High School in Madion, MS

PERSONAL

Son of Randall Walls and Jamie Wilkinson...Born on August 9, 1988...Majoring in pre-med

PLAYER PROFILES



58 **Brannon WILLISSON**

DE • 6'1" • 235 • JR
Fairhope, Alabama
(Fairhope High School)

Moves back to defensive end after a standout season at defensive tackle. One of the more talented ends in the American Southwest Conference.

2006 - JUNIOR SEASON

Moved to defensive tackle from his defensive end position...Had a breakout year ranking among the top ASC defensive lineman in tackles and sacks...His 30 combined tackles ranked 14th among ASC defensive linemen and 9th on the team...Led the team with 4.5 sacks which was good enough for 9th in the league...Had a season high seven tackles against Hardin-Simmons...Registered six tackles including one sack against Howard Payne.

2005 - SOPHOMORE SEASON

Played in eight games registering eight tackles including one tackle for loss...Had a season high three tackles against Louisiana College and in the season-ending blowout of Belhaven College.

FAIRHOPE HIGH SCHOOL

Played for Coach Mark Lasseter at Fairhope High...Earned All-County selection...Player of the Week honoree...Named a team captain...United States Sports Academy Athlete of the Month.

PERSONAL

Son of Waring and Laurie Willisson...Born on April 11, 1987...Majoring in business.

TACKLES BY YEAR

	G	UA	A	Total	TFL	Yds	PD	FF	FR
2006	9	18	12	30	4.5	28	0	0	0
TOTAL	9	18	12	30	4.5	28	0	0	0

SACKS BY YEAR

	G	UA	A	Total	Yds
2006	9	4	1	4.5	27



14 **Harrison YOUNG**

DB • 5'10" • 180 • JR

Expected to start at one corner position. Played both corner and safety last season but has the speed and athleticism to be a solid corner in the ASC.

2006 SOPHOMORE SEASON

Saw action in eight games as a backup defensive back...recorded 20 total tackles including seven solo stops...brought down an interception against Millsaps in the Backyard Brawl...recorded a season-high five tackles against East Texas Baptist and Sul Ross St

BEFORE MISSISSIPPI COLLEGE

Played for Roger Carr at East Mississippi CC...started nine games...led team with four interception as freshman...played for Coach Cuevas at Starkville High School...All-District...State Champions

PERSONAL

Son of Mr. and Mrs. Cornelius Young, Jr...Born on October 21, 1985...Majoring in kinesiology

TACKLES BY YEAR

	G	UA	A	Total	TFL	Yds	PD	FF	FR	Blkd
TACKLES	G	UA	A	Total	TFL	Yds	PD	FF	FR	Blkd
2006	8	7	13	20	0.0	0	1	0	0	
TOTAL	8	7	13	20	0.0	0	1	0	0	



Want to make
a difference?
Be different.

**Mississippi College Alumni know the
right path to a career starts here.**

At HORNE LLP, we are continuously looking for the future leaders of our Firm. Individuals who will add value to our team and exemplify integrity in all that they do. So if you want to stand out and make a difference at one of the Top 10 accounting firms in the Southeast, then join the 15 other Choctaws at HORNE. Visit www.horne-llp.com today. Check out the **Join Our Team** section for information on HORNE internships and careers and to find out when our recruiting team will be in Clinton.

The right path to your career starts here.



www.horne-llp.com

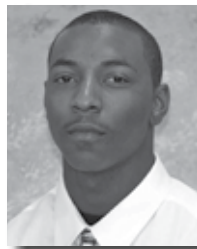
RECRUITING CLASS



**Robbie
ABBOTT**
FB • 6-0 • 200 • Fr.
Deerfield Beach, Florida
(Highlands Christian)



**Wesley
BOUDREAUX**
WR • 5-8 • 160 • Fr.
Covington, Louisiana
(Covington High School)



**Marcus
BROOKS**
QB • 6-3 • 200 • So.
Macon, Georgia
(Fort Valley State)



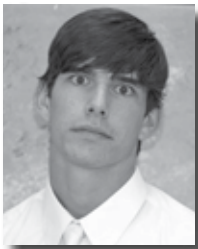
**Josh
CHANNEL**
LS • 5-10 • 200 • Fr.
Brandon, Mississippi
(University Christian)



**Tim
CORNELIUS**
RB • 6-0 • 200 • Fr.
Metairie, Louisiana
(Metairie Park)



**Ryan
DEER**
OL • 6-4 • 260 • Fr.
Pearl, Mississippi
(Pearl High School)



**DeWayne
ATKINSON**
DB • 6-4 • 185 • Fr.
Braxton, Mississippi
(Simpson Academy)



**Jonathan
BRADSHAW**
DB • 6-0 • 170 • Fr.
Covington, Georgia
(Newton High School)



**Gerald
BROWN**
RB • 5-7 • 165 • Fr.
St. Rose, Louisiana
(Jesuit High School)



**John
CHAPMAN**
FB • 5-10 • 240 • Jr.
Waveland, Mississippi
(St. Stanislaus HS)



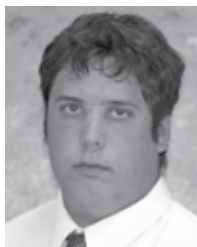
**Jared
CUMMINS**
LS • 6-2 • 185 • Fr.
Madison, Mississippi
(Madison Central HS)



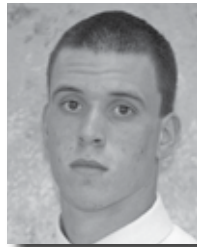
**Emel
DORLEANS**
DB • 5-11 • 175 • Fr.
Winter Haven, Florida
(Winter Haven HS)



**Barrett
BALL**
RB • 5-7 • 175 • Fr.
Baton Rouge, Louisiana
(Dunham High School)



**Tyler
BRADY**
OL • 6-2 • 290 • Fr.
Hattiesburg, Mississippi
(Presbyterian Christian)



**Matt
BURKE**
WR • 6-1 • 185 • Fr.
Hernando, Mississippi
(Hernando High School)



**Hunter
CLARK**
LB • 6-2 • 205 • Fr.
Hattiesburg, Mississippi
(Presbyterian Christian)



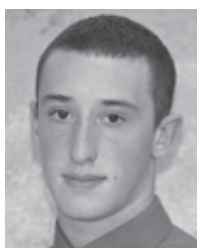
**Josh
DAVIDSON**
LB • 5-10 • 200 • Fr.
Meridian, Mississippi
(Southeast HS)



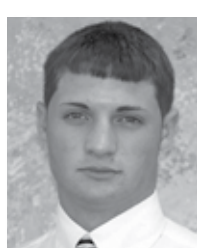
**Shamir
DORSEY**
WR • 6-2 • 200 • Fr.
St. Gabriel, Louisiana
(Dutchtown)



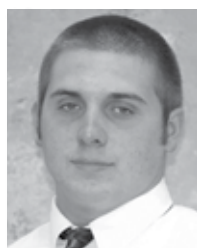
**Brett
BARNHILL**
LB • 6-1 • 205 • Fr.
Birmingham, Alabama
(Oak Mountain)



**Trey
BRASHER**
WR • 6-1 • 165 • Fr.
Moody, Alabama
(Moody High School)



**Colton
BYRD**
WR • 5-9 • 155 • Fr.
Mobile, Alabama
(Bryant High School)



**Kyle
CLIFTON**
OL • 6-2 • 275 • Fr.
Opelika, Alabama
(Opelika High School)



**Brandon
DAVIS**
WR • 5-10 • 160 • Fr.
Pensacola, Florida
(Tate High School)



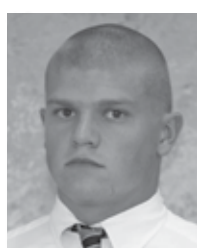
**Jonathan
DOUGLAS**
LB • 5-11 • 220 • Fr.
Pensacola, Florida
(Tate High School)



**Cortez
BLACKWELL**
DL • 5-11 • 270 • Fr.
Pensacola, FL
(West Florida HS)



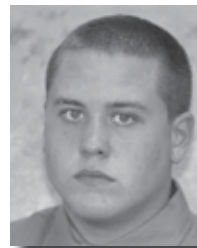
**DeMarcus
BROOKS**
DE • 6-8 • 240 • Jr.
Columbus, Mississippi
(East Mississippi CC)



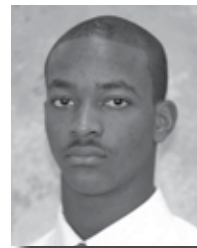
**Shannon
CAHILL**
WR • 6-1 • 205 • Fr.
Guntersville, Alabama
(Guntersville HS)



**Michael
COLLINS**
OL • 6-6 • 335 • Fr.
Madison, Mississippi
(Ridgeland High School)



**Chase
DAVIS**
OL • 6-2 • 275 • Fr.
Pensacola, Florida
(West Florida HS)



**Jaquarius
ERVES**
DB • 5-11 • 160 • Fr.
Pensacola, Florida
(Druid Hills)

RECRUITING CLASS



**John
FINNEGAN**
RB • 5-8 • 200 • Fr.
Flowood, Mississippi
(Madison-Ridgeland)



**D. J.
HALL**
OL • 6-0 • 230 • Fr.
Prattville, Alabama
(Prattville HS)



**Micah
HICKMAN**
QB • 5-10 • 190 • Fr.
Picayune, Mississippi
(Picayune HS)



**Jacob
JORDAN**
WR • 6-2 • 200 • Fr.
Madison, Mississippi
(Veritas HS)



**Jacob
LONDONO**
OL • 6-0 • 235 • Fr.
Covington, Louisiana
(Covington HS)



**Joe
MARQUEZ**
DB • 5-10 • 195 • Fr.
Madison, Mississippi
(St. Joseph HS)



**Zack
FOWLER**
FB • 5-11 • 225 • Fr.
Birmingham, Alabama
(Oak Mountain)



**Josh
HAWKS**
OL • 6-2 • 260 • Fr.
Pensacola, Florida
(Tate HS)



**Tucker
HOGE**
PK • 6-0 • 210 • Jr.
Brandon, Mississippi
(Southwest MS JC)



**Cody
KENNEDY**
OL • 5-11 • 275 • Fr.
Florence, Alabama
(Florence HS)



**Brian
MALONE**
QB • 6-1 • 180 • Jr.
Carson, California
(Valley Christian)



**Adam
MARTINI**
DL • 5-10 • 235 • Fr.
Biloxi, Mississippi
(Mercy Cross HS)



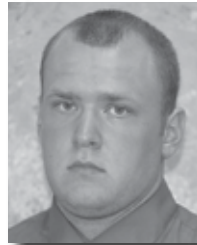
**Kerry
GETER**
WR • 6-3 • 180 • Fr.
Atlanta, Georgia
(Miller Grove HS)



**Alfred
HAWTHORNE**
LB • 5-8 • 200 • Fr.
Mobile, Alabama
(Faith Academy)



**Chris
HOWARD**
QB • 5-9 • 175 • Fr.
Starkville, Mississippi
(West Oktibeha HS)



**Chris
KRZYKOWSKI**
DL • 6-0 • 240 • Fr.
Canton, Mississippi
(Canton Academy)



**Dale
MANGHAM**
LB • 6-0 • 210 • Fr.
Covington, Louisiana
(East MS JC)



**Jordan
MAYE**
DB • 5-8 • 150 • Fr.
Mobile, Alabama
(Baker High School)



**Chris
GIBSON**
OL • 6-6 • 300 • Fr.
Trussville, Alabama
(Hewitt Trussville HS)



**Antonio
HAYES**
RB • 5-9 • 210 • Fr.
Gulfport, Mississippi
(St. John HS)



**Reginald
HURNS**
LB • 6-2 • 205 • Fr.
Cleveland, Mississippi
(East Side HS)



**Corey
LAIDLAW**
RB • 6-0 • 185 • Fr.
Brentwood, Tennessee
(Ravenwood HS)



**Chase
MANNICH**
DL • 6-2 • 270 • Fr.
Fairhope, Alabama
(Fairhope High School)



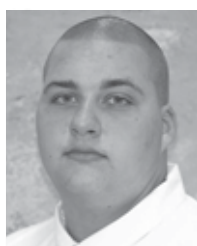
**Drew
McGuffee**
LB • 5-9 • 240 • Fr.
Monroe, Louisiana
(River Oaks High School)



**Cody
GOSS**
TE • 6-5 • 205 • Fr.
Philadelpia, Mississippi
(Neshoba Central)



**Ulises
HERNANDEZ**
OL • 6-1 • 280 • Fr.
Ridgeland, Mississippi
(Ridgeland HS)



**Jacob
JOHNSON**
OL • 6-3 • 305 • So.
Brandon, Mississippi



**Lucas
LINDSEY**
DL • 6-0 • 230 • Fr.
Franklinton, Louisiana
(Bowling Greene)



**Kevin
MARLOWE**
RB • 5-5 • 160 • Fr.
Birmingham, Alabama
(Evangel Christian)



**Jared
MCNEAL**
LB • 6-0 • 240 • Fr.
Headland, Alabama
(Headland High School)



Dale MEITZLER
LB • 5-9 • 195 • Fr.
Picayune, Mississippi
(Picayune High School)



Chad ORRELL
OL • 6-0 • 270 • Fr.
Theodore, Alabama
(Theodore High School)



John RITCH
DB • 5-7 • 165 • Fr.
Winter Haven, Florida
(Winter Haven HS)



Hall SCHNEIDER
WR • 5-8 • 160 • Fr.
Lake Providence, LA
(Briarfield)



Chris TARVER
TE • 6-3 • 180 • Fr.
Winder, Georgia
(Mill Creek)



Harris WEEKS
OL • 6-4 • 325 • Fr.
Atlanta, Georgia
(Chamblee)



Adam NIXON
WR • 6-0 • 175 • Fr.
Baton Rouge, Louisiana
(Dunham High School)



Corey OUTLAW
LB • 5-9 • 195 • Fr.
Madison, Mississippi
(Madison Central HS)



Chris ROGERS
OL • 6-0 • 290 • So.
Starkville, Mississippi
(East MS CC)



Justin SLATER
LB • 5-11 • 185 • Fr.
Headland, Alabama
(Headland High School)



Willie VANDERFORD
LB • 6-2 • 220 • Fr.
Sycamore, Tennessee
(Sycamore High School)



Chris WILLIAMS
DL • 6-2 • 235 • Fr.
Meridian, Mississippi
(Lamar High School)



Kyle MOORE
OL • 6-3 • 290 • Fr.
Rayville, Louisiana
(Riverfield Academy)



T. J. PRIDE
WR • 6-0 • 170 • Jr.
Tishomingo, Mississippi
(Tishomingo HS)



Blake ROWELL
DB • 6-2 • 200 • Fr.
Satsuma, Alabama
(Satsuma HS)



Ross SMITH
DE • 6-3 • 215 • Fr.
Purvis, Mississippi
(Purvis High School)



Clint VOAK
DL • 6-1 • 260 • Fr.
Headland, Alabama
(Headland High School)



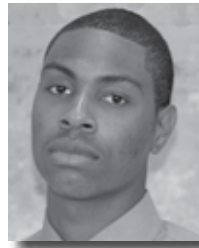
Nolan WILLISSON
DL • 6-1 • 255 • Fr.
Fairhope, Alabama
(Fairhope High School)



Jeremy NICHOLAS
DB • 5-11 • 185 • Fr.
New Orleans, Louisiana
(Helen Cox HS)



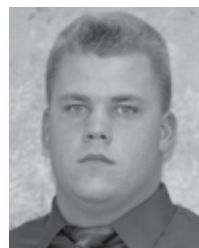
Jason RAY
LB • 6-0 • 210 • So.
Birmingham, Alabama
(Carver High School)



Anthony SALLIS
WR • 6-4 • 205 • Fr.
Atlanta, Georgia
(Mundy's Mill)



Chase SMITH
OL • 5-11 • 240 • Fr.
Pearl, Mississippi
(Pearl High School)



Bert WALKER
OL • 6-2 • 295 • Fr.
Pensacola, Florida
(Pine Forest High School)



Cody WRIGHT
OL • 6-2 • 270 • Fr.
Barlow, Mississippi
(Cophiah Academy)



Javarion NIX
LB • 5-9 • 200 • Fr.
Terry, Mississippi
(Raymond HS)



Grant RIDGEWAY
DB • 6-0 • 175 • Fr.
Palm Harbor, Florida
(Clearwater Central)



Zak SANDERS
LB • 6-0 • 220 • Fr.
Mendenhall, Mississippi
(Simpson Academy)



Ryne SMITH
PK • 5-11 • 160 • Fr.
Madison, Mississippi
(Madison Central HS)



Ryan WEEKS
LS • 6-0 • 185 • Fr.
Mobile, Alabama
(Faith Academy)



Cory YORK
OL • 5-10 • 275 • Fr.
Okeechobee, Florida
(Okeechobee HS)